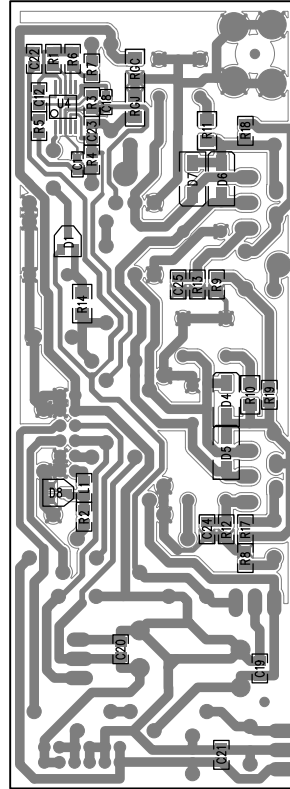


ADD JUMPERS AT LOCATIONS SHOWN (18)



SECONDARY SIDE VIEW

BILL OF MATERIAL REPORT  
-----

REPORT DATE/TIME: 10/26/2012 9:16:28 AM

BOARD NAME: VYPYR2 VIP 2 POWER AMP

ASSEMBLY LEVEL NUMBER: 32203005E

PROJECT NUMBER: P1100025

DESIGNER: JTH-32101807E

Qty.	Part # Designators	Description	Reference
-----			
1	30200010	0.0 1/4W 5% MF 1206	RGJ
3	30200041	4.7 1/4W 5% MF 1206	R10 R11 RGC
1	30200047	1K 1/4W 1% MF 1206	R14
1	30200174	10K 1/10W 1% MF 0805	R1
4	30200194	100K 1/10W 1% MF 0805	R4 R5 R6 R7
3	30200259	39.2K 1/10W 1% MF 0805	R17 R18 R19
2	30200335	68.1K 1/10W 1% MF 0805	R12 R13
1	30200342	221K 1/10W 1% MF 0805	R3
2	30200356	475 1/10W 1% MF 0805	R8 R9
1	30200542	243K 1/10W 1% 0805	R2
2	30250099	0.2---3W-----5%---MO--T&R	R20 R21
2	30300088	100PF 50V 5% NPO 0805	C24 C25
5	30300093	0.1UF 50V 10% X7R 0805	C19 C20 C21 C22 C23
1	30300121	0.1UF 50V 5% X7R 0805	C12
1	30300128	0.1UF 50V □20% Y5V 0603	C1
1	30300222	470PF 50V 5% NPO 0603	C18
8	30320181	22UF 50V 20% EL RAD	C2 C3 C4 C5 C6 C7 C8 C9

2	30320186	1000UF 35V 20% EL RAD	C16 C17
1	30320624	100UF 100V 20% EL RAD	C15
1	30330115	0.033UF 50V 5% PE RAD	C30
6	30330128	0.22UF 50V 5% PE RAD	C10 C11 C13 C14 C28 C29
1	30400315	7912F -12V INSUL TO-220F	U3
1	30400321	7812F VREG TO-220F	U1
1	30400322	7805F INSUL TO-220F	U2
2	30409207	TDA2050V 30W PWRAMP TO220-5VER	U5 U6
4	30418261	1N4003 - SMT - SMA PKG	D4 D5 D6 D7
2	30418655	BAV99L DUAL 4148 DIODE SO	D1 D8
1	30418836	NJM4580 DUAL OPAMP SSOP8	U4
2	30464744	1N4744A 15V 1W 5% ZENER	D2 D3
1	30500927	FERRITE CHIP SMT 600OHM 0.2A	L1
1	30901785	SCREW TERM, 6-32 -PCB MT	HW1
2	33713813	WR-TO-BD CRIMP TERM 18GA	P1 P2
2	33717360	12 HDR V DR 2MM GOLD	PDSP PPS
18	JUMPER	WIRE JUMPERS	JMP1 JMP2 JMP3 JMP4 JMP5 JMP6 JMP7 JMP8 JMP9 JMP10 JMP11 JMP12 JMP13 JMP14 JMP15 JMP16 JMP17 JMP18

-----  
 END OF BILL OF MATERIAL REPORT  
 -----